

## Crime Alert

### Headphone Thefts

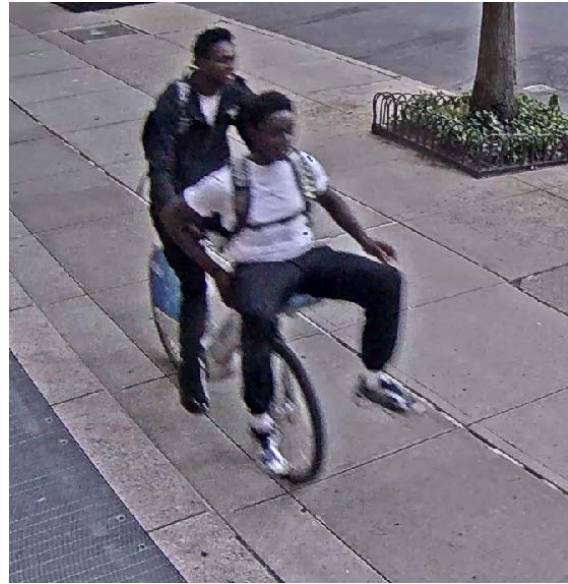
Columbia University Public Safety has been notified by the NYPD of a series of headphone thefts that occurred near the Morningside and Manhattanville campuses over the weekend. The incidents involved a group of male-presenting teenagers riding CitiBikes and wearing masks. One individual was often seen sitting on the front basket of a bike. The suspects reportedly approached pedestrians from behind—either on the street or sidewalk—and removed headphones from their heads. Fortunately, no injuries have been reported.

Two incidents were reported directly to Public Safety. One occurred on Sunday, August 31 at approximately 7:00 p.m. on Broadway between West 118th and West 119th Streets. The second incident occurred on Monday, September 1 at approximately 7:21 p.m. on Broadway at West 131st Street.

We strongly encourage anyone who experiences or witnesses a crime to report it to both Columbia University Public Safety ([Morningside \(212-854-2797\)](tel:212-854-2797) / [Manhattanville \(212-853-3301\)](tel:212-853-3301) / [Medical Center \(212-305-8100\)](tel:212-305-8100)) and the NYPD. Timely and accurate reporting helps enhance awareness of incidents occurring in and around our campuses, enabling more effective resource allocation and communication with the community.

#### Safety Tips

- Stay aware of your surroundings and minimize distractions. Devices like cell phones, earbuds, and other electronics can reduce your ability to hear and observe what's happening around you, increasing vulnerability. Headphones worn on the head are particularly easy to grab and have been frequent targets in recent incidents.
- Be cautious of scooters, bicycles, or other vehicles that pass unusually close to the sidewalk. This behavior may indicate an attempt to approach pedestrians quickly and unexpectedly.



**DISCLAIMER:** Clery Crime Alerts (Timely Warning Notifications) are distributed pursuant to the Jeanne Clery Campus Safety Act. Columbia University is required to alert the campus community when certain crimes occur in our Clery Act defined campuses that represent a serious or continuous threat to the community.

To see this and other Clery Crime Alerts please visit our [Public Safety website](#). For more information about Columbia University's Clery Act compliance efforts, please contact the Department's Clery Act Compliance Director, Roberto A. Pineda Sanchez at [ps-compliance@columbia.edu](mailto:ps-compliance@columbia.edu).